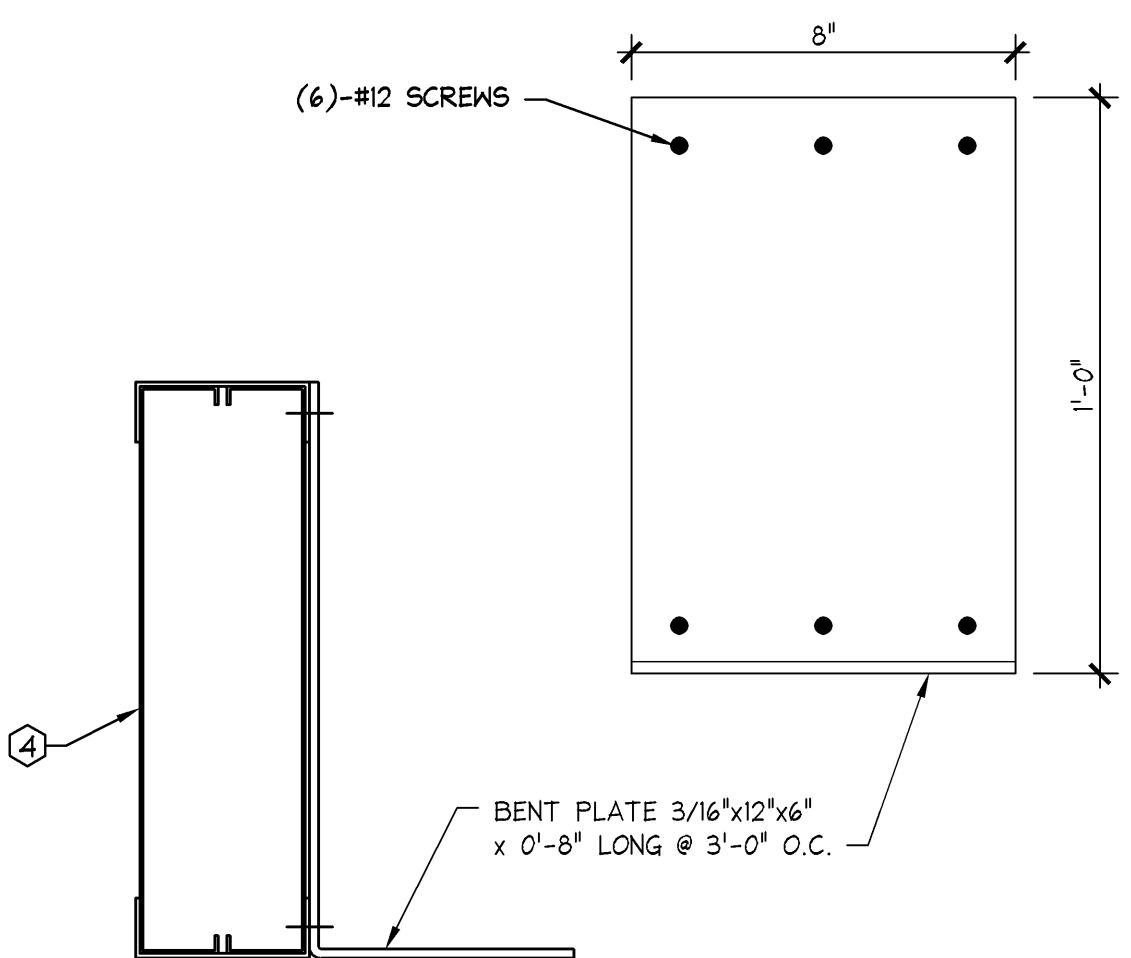
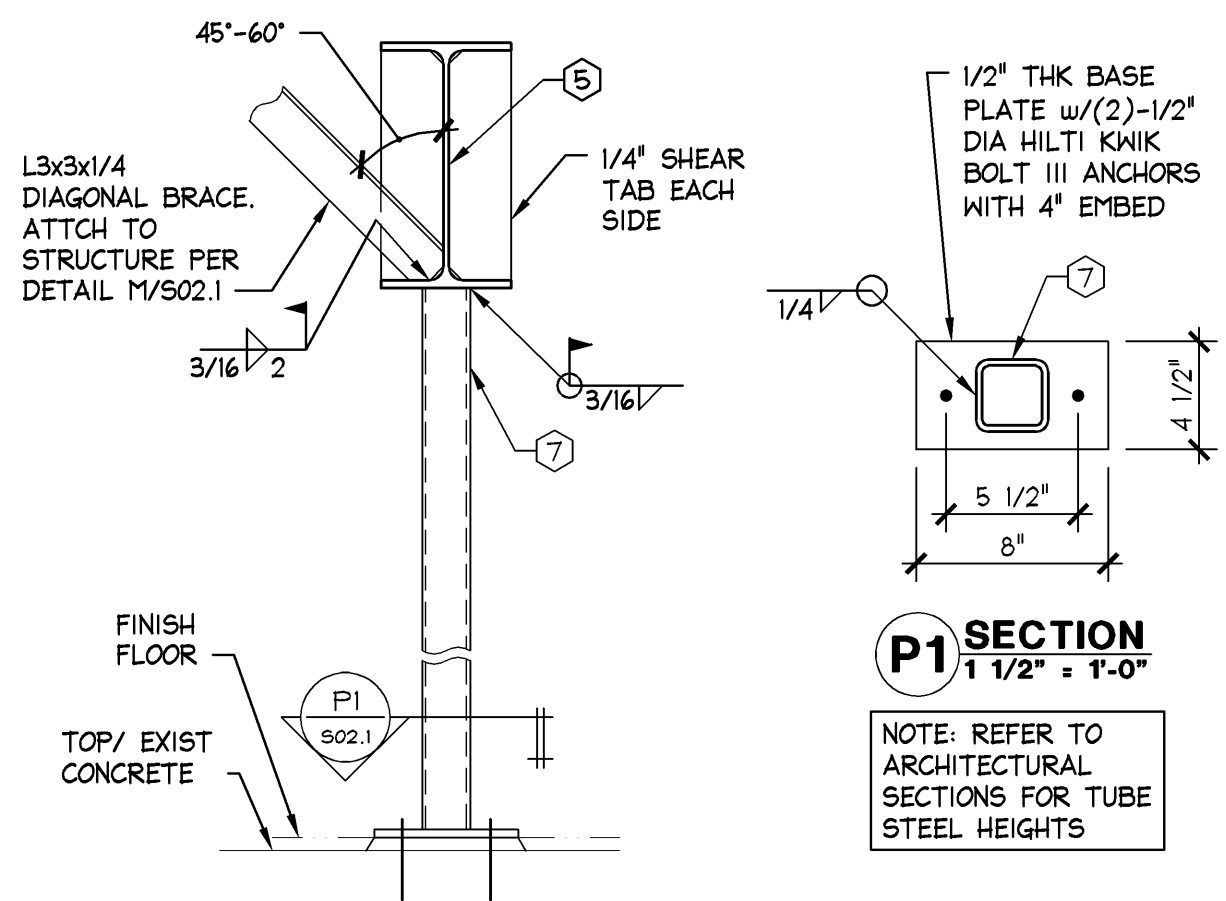


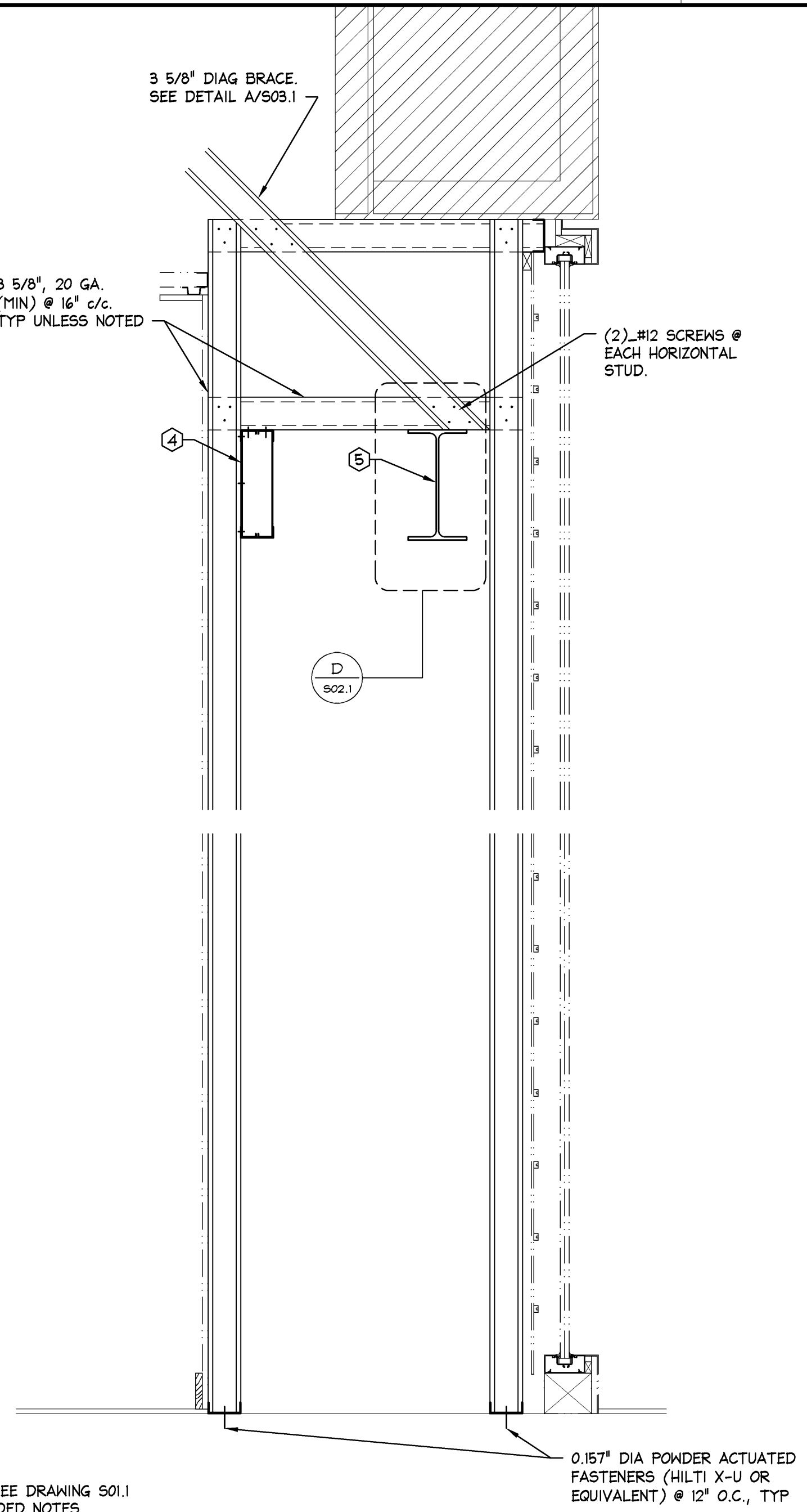
NOT USED S DIAGONAL BRACE ATTACHMENT 1 1/2" ±1'-0" M BEAM SUPPORT DETAIL 1 1/2" ±1'-0" H TRACK TO BEAM CONNECTION 1 1/2" ±1'-0" D



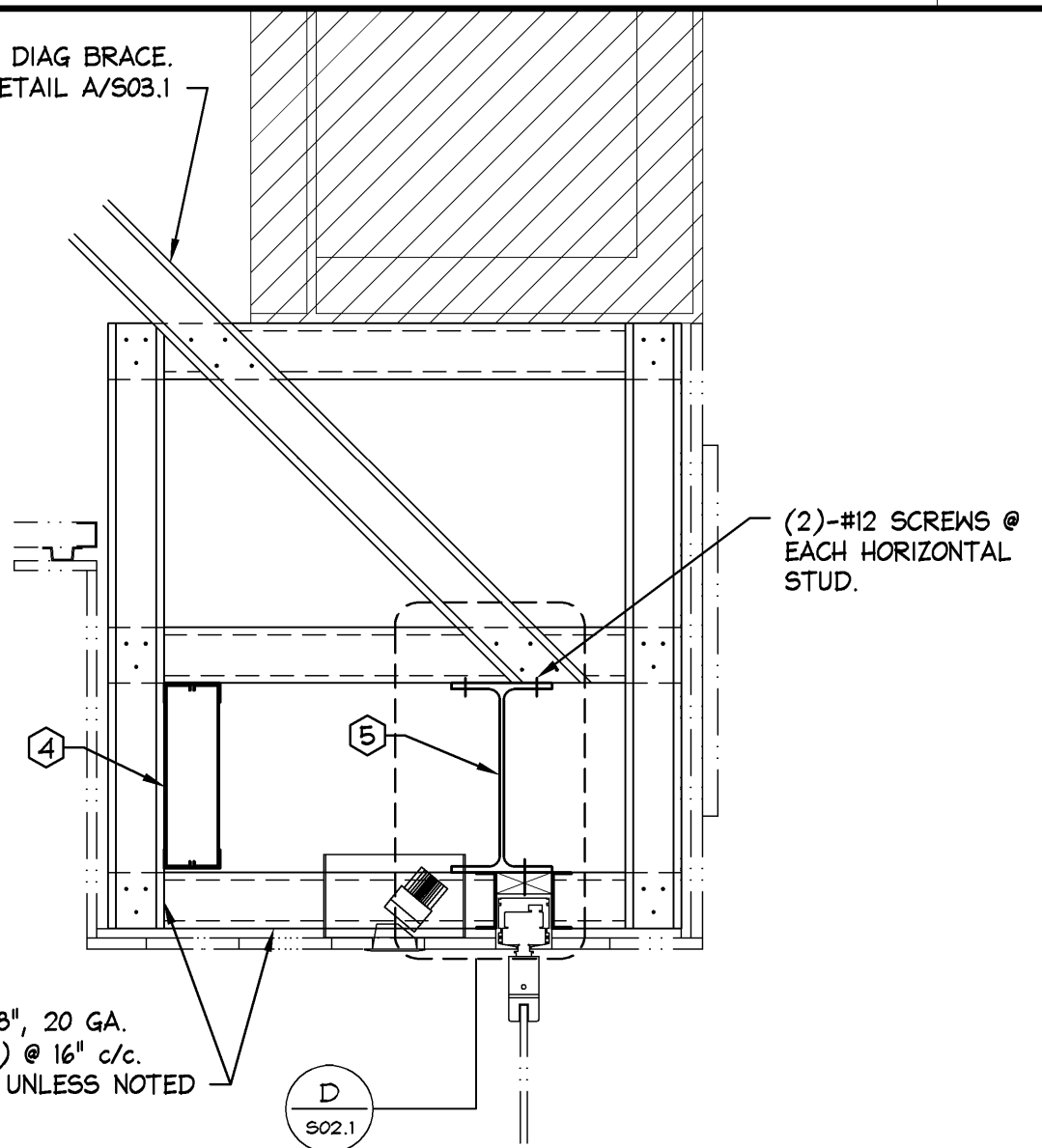
SUPPORT DETAIL 3" ±1'-0" R



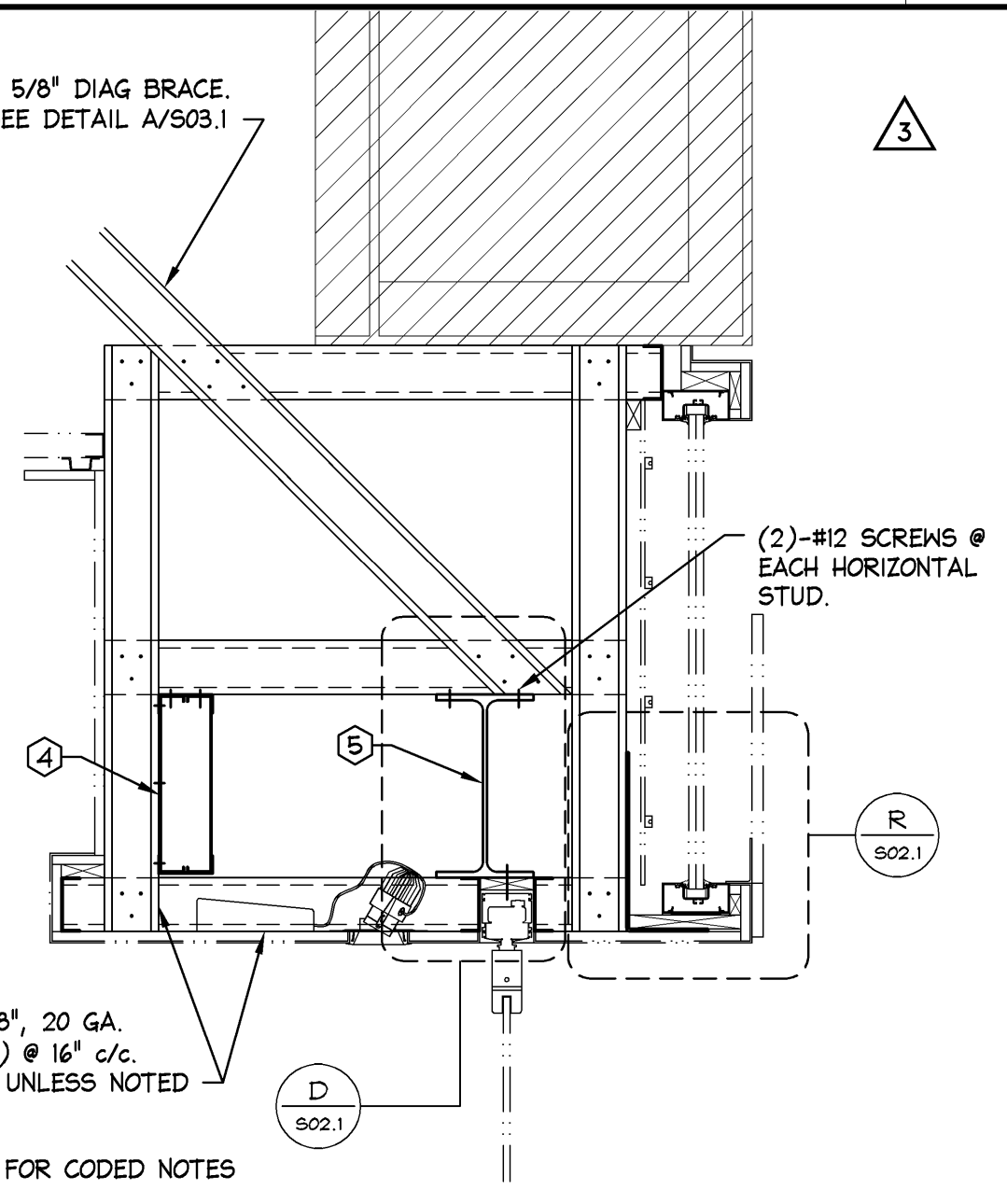
COLUMN DETAIL N.T.S. P NOT USED



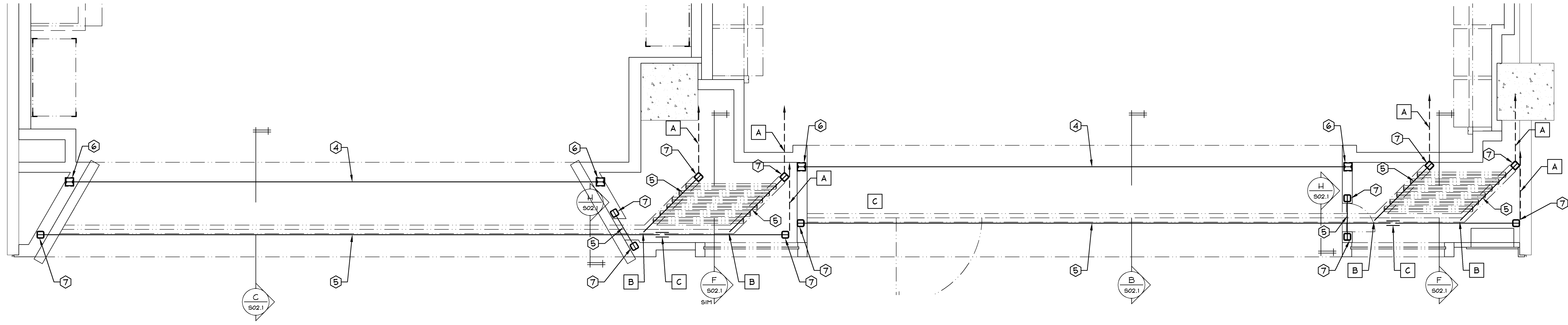
STOREFRONT SECTION 1" ±1'-0" K



STOREFRONT SECTION 1" ±1'-0" C



STOREFRONT SECTION 1" ±1'-0" B



STOREFRONT FRAMING PLAN 1/2" ±1'-0" A

PAUL J FORD AND COMPANY
250 EAST BROAD STREET
SUITE 600
COLUMBUS, OHIO 43215
614-221-6679
A35014-0023

ELITE CONSTRUCTION GROUP
LAKE JACKSON, TX
PHONE: 979-285-0712
NOTE: THESE PRINTS HAVE BEEN
REDUCED BY 50 PERCENT. SCALE
WILL BE 50 PERCENT OF WHAT IS
NOTED ON PLANS

CORPORATE REGISTRATION
No. F-002728

Limitedbrands
LIMITED STORE PLANNING, INC.
d/b/a STORE DESIGN & CONSTRUCTION
Three Limited Parkway - Columbus, Ohio 43230
Telephone: 614.415.7000 • Fax: 614.415.7349

24200161
BATH & BODY WORKS
THE GALLERIA II
SPACE NO. B3680
5085 WESTHEIMER RD.
HOUSTON, TX 77056
FULL REMODEL
EASTON-G
00061216
PACKAGE:
GENERATION:
A/E PROJECT #:
PKG 1+
14150
130840

PROJECT INFORMATION:
REVISIONS:
REQUIRED BY: DATE
BUILDING DEPARTMENT COMMENTS 04/11/14
DESIGN CHANGES/ LANDLORD COMMENTS 06/05/14
MASTERS UPDATES 05/28/14
DESIGN CHANGES 06/27/14
DATE ISSUED: 3/7/14
DESIGNED BY: GDK
DRAWN BY: RLA
CHECKED BY: GDK
STOREFRONT FRAMING PLAN
DRAWING NUMBER:
S02.1